



Village Hall  
York Road  
Earls Colne  
CO6 2RN  
01787 224370

Clerk to the Council: Sarah Gaeta  
[clerk@earlscolne-pc.gov.uk](mailto:clerk@earlscolne-pc.gov.uk)

**MINUTES OF THE PLANTING COMMITTEE MEETING  
HELD AT THE VILLAGE HALL (CHAMBER)  
ON TUESDAY 7<sup>TH</sup> APRIL 2026 AT 12.00PM**

**Present:**

Councillor L Bauckham-Leys (Chairman)  
Councillor J Jemmett  
Councillor P Wall  
Clerk  
1 member of the public

**26/PL1. Committee Membership**

Councillors Bauckham-Leys, Dennis, Jemmett and Wall were confirmed as committee members.

**26/PL2. Apologies for Absence**

Apologies were received and accepted from Councillor Dennis.

**26/PL3. Declarations of Interest**

None.

**26/PL4. Public Participation session**

One member of the public raised the following:

- Request for agendas to be published on all noticeboards.
- Progress of land transfer from Cala Homes and Section 106 funds available.
- Report to be made available to residents.

**26/PL5. Update on planting plans**

An update on planting plans was received. Improvements throughout the village will be considered.

**26/PL6. Update on meeting with Olivers Plants**

An update on the recent meeting with Olivers Plants was received. Trade prices with potential donations and other support have been offered.

**26/PL7. To consider the report and proposal for the North and South Green and agree action to be taken**

The committee reviewed the report and **it was resolved** to recommend the following to full Council (see appendix 1):

- North Green benches A and B to be repainted.
- Bench C to be replaced by a 6ft Harvington wooden bench, or 5ft if the larger size is unavailable.
- South Green bench slat to be replaced.
- Seven 1000 x 1000mm western red cedar planters and one 1500 x 500mm.
- Black aluminium noticeboard.



- Two steel waste bins.
- Pagoda pole baskets, maximum 24 depending on permissions to install on streetlighting.
- Grass improvement programme and tree care.
- Streetlight and bollard improvement works, subject to permissions/licenses from ECC, up to a maximum of 28 at £100 each.

**26/PL8. Date of next meeting and items for the agenda**

The date of the next meeting will be confirmed in due course.

**Meeting closed at 1.13pm**

## Appendix 1

# EARLS COLNE PARISH COUNCIL – Planting Committee 7<sup>th</sup> April 2026 - Recommendations

## PROPOSAL FOR IMPROVEMENTS TO NORTH GREEN AND SOUTH GREEN

### 1. BENCHES– NORTH GREEN

The North Green has three benches.

Benches A and B have been cleaned and as some old paint remains are being repainted. The base area surrounding each bench will be tided/cleaned.

Paint Cost **£35.00 AGREED**

Bench A



Bench B



**Bench C** (which is estimated to be 40+ yrs old) is rotten in several places and will need to be replaced. In addition, the base (which the Bench sits on) needs to be replaced as it is no longer level and could pose a risk.



The Planting Committee is asked to select a replacement bench (if not black suggested stained)

**Option A TaylorMade – Max £439.00 AGREED**

### HARVINGTON 5FT BENCH



- Made in the UK 
- 15 Year Anti-Rot Guarantee
- Made with PEFC certified timber
- Delivered flat packed for easy self-assembly
- 45 minute DIY build time
- Leadtime is upto 4 weeks but usually within 1 - 2 weeks
- Free UK Delivery across the UK Mainland

Product Dimensions – Height x Width x Depth

96cm H x 152cm W x 67cm D

**£399.99**

QUANTITY

– 1 +

ADD TO BASKET

**6 ft bench chosen if available; 5 ft bench if not**

## 2. REPLACEMENT SLAT- SOUTH GREEN

The bench on the South Green has a broken back slat but otherwise is in a good state of repair. We are hoping to obtain a replacement slat from the suppliers.

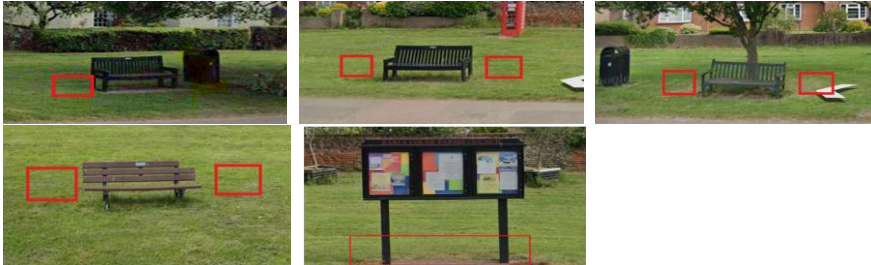
**AGREED**



### 3. PLANTERS

Recycled planters were proposed at the November ECPC meeting (ref 25/80b); however, this item was not taken forward as no Councillor seconded the proposal.

It is therefore proposed that timber planters are proposed for the North and South Green



#### WESTERN RED CEDAR



- Premium Joinery Grade Timber
- Hand Selected Grade 1 Cedar
- Built to Your Size & Specifications
- Drainage to Prevent Water Log
- Handmade in the UK
- Fully Lined & Ready to Plant

Require A Custom Size or Shape? Please Call 024 7746 0511

ONLINE ENQUIRY

 Benefits & how to use Irrigation Tanks

All Dimensions are External & in Millimetres (mm) L x W x H

If you select to add an irrigation tank to your chosen planter, the correct tank

**Sustainable Planter Design** The proposed planters have been selected with sustainability and longevity in mind.

Key features include:

- Hand made in the UK
- Constructed using certified sustainable timber
- Cedar construction, naturally resistant to rot
- Pressure treated timber
- 10-year timber guarantee
- Expected lifespan of 50+ years

This reduces the need for replacement and minimises environmental impact.

#### Integrated Irrigation Systems

It is recommended that the planters include integrated irrigation tanks. Research conducted by the University of Reading demonstrates several advantages.

- Reduced Maintenance - Planters with irrigation systems require watering up to 50–75% less frequently.
- Water Conservation- Water is delivered directly to plant roots, reducing waste and achieving water savings of at least 30%.
- Healthier Plant Displays

Consistent soil moisture prevents stress on plants, leading to:

- Stronger root systems
- Healthier plants
- Better flowering displays

- Seven Planters to be placed alongside the benches on both greens. It is recommended for both the security of the planter and health of the plants the following planters are deemed most appropriate.

Size	Cost per planter	Use
1000 x 1000 mm	£1,237.99 AGREED	Shrubs and seasonal planting 26/4PL/5

b. A planter placed in front of the noticeboard will create a focal point and improve the presentation of the area.

Size	Cost per planter	Use
1500 x 500	746.99 AGREED	Shrubs and seasonal planting

Soil for planters Max £600 AGREED

**Total £10,011.93**

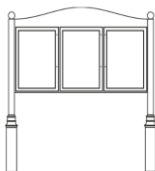
**Note:** It has not been possible for like-for-like planters to be sourced from a local provider. If, however, this is possible (at no additional cost) they will be purchased subject to the agreement of the Parish Clerk.

## 4.VILLAGE NOTICEBOARD

The existing village noticeboard is seriously deteriorating, and the glass presents a high safety risk. It is proposed that it is replaced.

**Option A - The Parish Noticeboard Company Total cost: £2,440 (can be fitted by them) AGREED**

- Market leader, like for like cant be beaten on price
- high-quality aluminium external noticeboard.
- 5yr guarantee
- Three display panels
- Weatherproof construction
- Toughened glass
- Weatherproof seals
- Virtually maintenance-free



3 doors  
Ornate posts  
Shaped header  
A1 display: £2440 + VAT  
A2 display: £2225 + VAT

**Black, 3 panel chosen**

## 5.LITTER BINS

The existing litter bins on the greens are in very poor condition and cannot be repaired to a reasonable standard and therefore need to be replaced. In addition, this will improve the overall look of the North Green.



### Option C Recycling Bins Direct £475 (can install these items) AGREED

Constructed from high quality **stainless steel** and **galvanised steel**, these bins are built to withstand heavy use and challenging weather. Corrosion resistant finishes support reliable outdoor placement, while smooth surfaces make cleaning quick and straightforward. **Metal bins** offer excellent durability, improved hygiene, and better fire resistance than many plastic alternatives, making them ideal for high traffic locations.

- capacity of 120 litres and a unique door bar hinge system.
- One of the key factors in the Derby Range's success is its unique door bar hinge system that has seen the bin used throughout the UK and not a single door has been forcibly removed in over 25 years.
- Flat Top as standard, 4 posting apertures.
- 2mm galvanized steel with heavy duty front opening door.
- 4mm galvanized steel base.
- Vinyl LITTER lettering beneath each posting aperture, with a gold backing plate
- 0.7mm galvanized steel liner with safety top edge and 2 handles.
- 10mm heavy-duty stainless-steel pivot hinge.
- Stainless steel slam lock mechanism.
- Hexagonal key operated heavy-duty lock.
- Angled litter direction plates.
- Stainless steel keyhole protectors.
- Dimensions: Height, 1020mm. Width, 535mm. Depth, 535mm.
- Weight: 65kg.Suitable for external use.



## 6. UP THE POLE BASKETS

The installation of floral baskets on village lampposts will create a vibrant and attractive display throughout the seasons, significantly enhancing the visual appeal of the area. Such features help to create a more welcoming and well-maintained environment for both residents and visitors, while also fostering a sense of community pride and contributing positively to the overall character and charm of the village.

The proposed use of self-watering “up-the-pole” baskets offers additional practical benefits. These systems are designed to minimise water loss through evaporation and do not leak, meaning they typically require watering only once or twice a week. As a result, they provide a cost-effective and efficient solution, saving time, water, and maintenance effort. Furthermore, the units are robust, easy to install, and can be securely mounted to lampposts using purpose-built brackets.

There are currently two lampposts in this area, and it is proposed that these baskets be installed on them.

Due to lead times for ordering, the time required to plant each liner, and the cost benefits of bulk purchasing, it is recommended that a total quantity sufficient for 20 lampposts be ordered.

At present, there are 28 lampposts from North Green through to and including Pump Green, allowing the baskets to be distributed evenly across these locations.

**Option B G - Views Pole Basket Package - £129.26 Per Unit (For 24 Units - £124.76 Per Unit) AGREED**

### Pagoda Pole Basket

Everything you need for creating stunning floral displays for any pole or lamppost up to a 110mm max diameter. Easily installed the Pagoda Pole Basket Package provides a high impact display while offering security and stability. With all the great features you would expect from the Pagoda range, our Pole Basket is designed to be an extremely hardwearing, cost effective and low maintenance planting solution.

The Pagoda Pole Basket comes with our popular self-watering capillary matting and features an easy fill watering channel for fuss-free maintenance. The smooth edges allow plants to flow over easily, and its UV stable and highly durable construction mean it will look great season after season.

Our Easy Drain feature allows the reservoirs to be emptied while still in situ, making removal and transportation significantly less labour intensive – and less risky. Our Self Watering Liners mean installing and removing planting is also simple and hassle free.

### Included in the Pagoda Pole Basket Package:

- 2 x Pagoda Pole Basket Half Units
- 2 x Self-Watering Removable Liners
- 2 x Steel Fixing Brackets

Overall Diameter:	685mm
Height:	405mm
Water Capacity:	20 Litres
Compost Capacity:	16 Litres
Pole Diameter:	110mm Max

\*All measurements per Half Basket



# Pagoda Pole Basket Package

The advertisement features a large image of a black Pagoda Pole Basket filled with pink and white flowers, mounted on a silver pole. To the right, a close-up shows the basket's internal structure, including a self-watering liner and a drainage system, with a circular icon containing a right-pointing arrow. Below the main image is a grid of icons representing various features: a recycling symbol, a diamond, a crossed hammer and wrench, a rainbow, the Union Jack, an ISO logo, a water tap, a leaf, and a tree.

## 24 Baskets £2976

**Clerk: Due to Highways Licensing requirements for installation on streetlighting over a highway, and related timescales, it may only be possible to install on the North and South Greens at this moment in time**

## 7. GRASS IMPROVEMENT PROGRAMME

The quality of the grass across the greens is below par with bald patches and heavily weedy. This could be easily improved through a basic lawn improvement programme, including:

- Weed treatment
- Overseeding
- Aeration
- Scarification

This would improve both the appearance and health of the greens. Olivers plants have agreed to provide weed & seed for the greens at trade price.

Estimated cost £250 AGREED

## 8. TREE CARE

Cllr Dalton is monitoring the larger trees on the green.

The greens contain three olive trees and one fig tree. To support their successful growth, the following steps are recommended:

- Soil improvement around root zones
- Appropriate feeding
- Monitoring during the growing season

Estimated cost £50 AGREED

## 9. PLANTING BUDGET

A planting budget will be required for the planters and baskets. The estimated cost to be prepared once agreement to purchase planters and baskets has been finalised

- Seasonal bedding plants
- Shrubs where required

*To be confirmed*

## 10. STREET LIGHTS & BOLLARDS



The positioning of baskets on lamp post will significantly draw attention to the current state of these posts. At present, the majority of the street lights and bollards are in a visibly deteriorated condition. The paint is peeling in several areas, and in some cases has worn away completely. This not only detracts from the overall appearance of the village but may also lead to longer-term degradation if left unaddressed.

Whilst this proposal is primarily focused on enhancing the North and South Greens, it would make far more sense both practically and financially to undertake the repainting of all street lights and bollards at the same time. Completing the work in a single programme is likely to be more cost-effective and ensure a consistent finish throughout the village.



I have contacted three companies to obtain quotations for the work. To date, one quotation has been received, with a cost in the region of £85–£100 per lamp. Despite follow-ups, the other companies have not responded. The area requiring work includes approximately 28 street lamps, extending from the start of North Green through to Pump Green, along with associated bollards.

Given the efforts made to obtain multiple quotes and the reasonable nature of the pricing received, I request approval to proceed with the works on the basis that costs do not exceed £100 per lamp.

This maintenance will help preserve village assets, improve visual appearance, and prevent further deterioration.

**Spray Shield Ltd** – sent email

**Your Colour** – sent contact form

**RLP Painting Contractors** £85–£100 per lamp AGREED

**Clerk: Same requirement for a Highways Licence, therefore, it may be more feasible to address those on both greens at this time**

## 11. Water Boser – to be researched and presented at next Committee meeting

### Benefits of & how to use an Irrigation Tank

There are many proven advantages of using Irrigation Tanks;

- Less frequent watering:** independent research by the University of Reading has conclusively proved that plants in containers, hanging baskets or planting beds that are irrigated using Tanker systems require watering only half as frequently as those planted without at worst case and upto 4x less frequently best case. As a result Councils and landscapers have been able to slash maintenance labour budgets by using special Tanker hanging baskets, pillar and railings planters and also by retro fitting Tanker units to existing planters. For private gardens, home owners at least halve the burden of keeping their planters watered if not quarter and can go on holiday in the summer with less worry about what they will find on their return.
- Water conservation:** As water is delivered straight to the rootball only as required by the plant, Tanker systems greatly reduce the amount of water required to irrigate any plant display. Even in a sealed system, such as a planter, the documented saving is at least 30%. For exterior beds, hanging baskets and drained planters, the savings will be much greater. With water restrictions a regular feature in many areas, this aspect of the system is becoming increasingly important to our customers.
- Healthier, better looking plants:** Tanker only delivers water to the roots as needed, eliminating the flood/drought cycle experienced by manually watered plants. Soil moisture is optimised and the plant does not experience water stress. The result is a denser, larger rooting system and more compact, healthier growth above ground. Councils using the system report that the displays produced using bedding plants are the best they have ever experienced with more and larger flowers and growth so vigorous that in some cases it had to be cut back – and all achieved with less than half the watering visits previously required.

Our Tanks come in various shapes and sizes to suit almost any possible application. If you select to add a tanker to your chosen planter we will send the specific tanker to suit.

Ideally you want your rootball of your chosen plant to sit around 2 – 4 inches above the tank unit (50mm – 100mm), so for a tall planter back fill the planter first than place in the tanker keeping it as level as possible then add a little extra compost to give you the 2 – 4 inches clearance then plant your plant and add as much compost as required. The filler pipe needs to be connected to the tank before you backfill and plant your plant to ensure that it comes up through the soil level so you can easily access the filler cap once the planter is planted to be able to fill the tank. Once planted give your plant a manual watering which will activate the capillary action of the roots and from then on the roots will naturally take water from the tank as and when needed.

This is how a taller planter would look;

